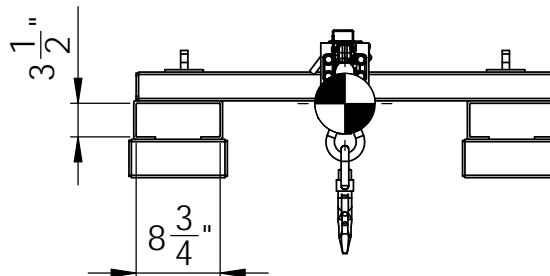
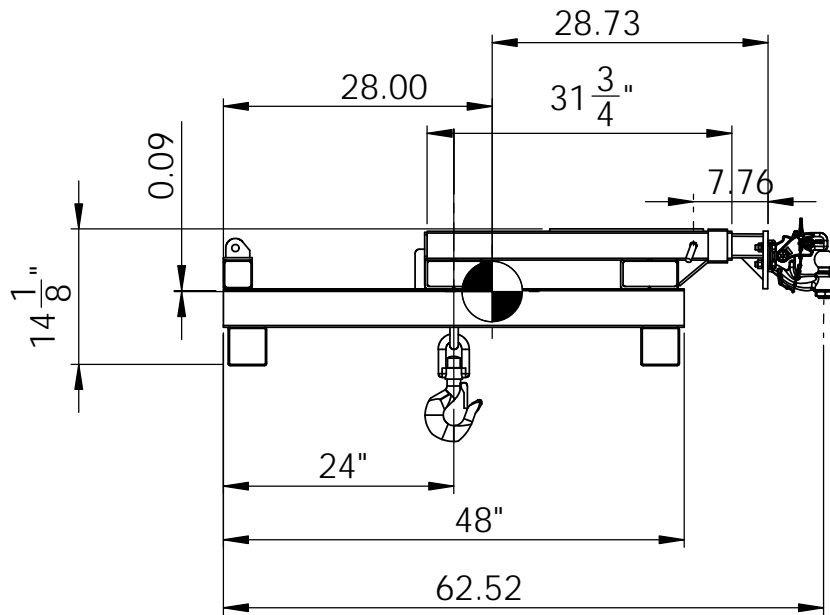
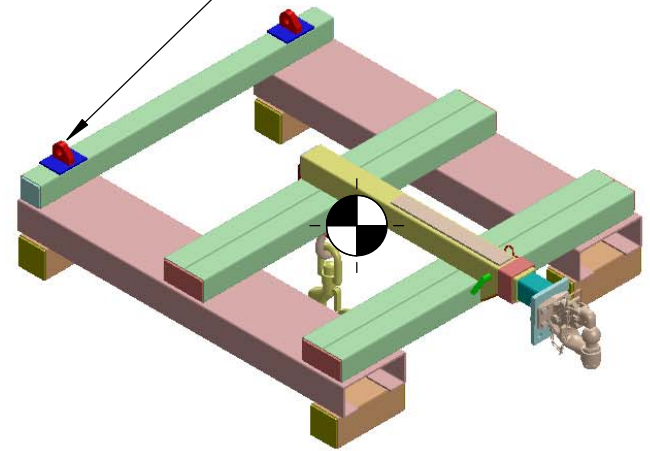


GRADE 100 SAFETY CHAIN  
WITH LOCKING GRAB HOOKS  
NOT SHOWN - TYP BOTH SIDES



RATED LOAD CAPACITIES:  
SWIVEL HOOK UP TO 12k (10,000 LBS. STANDARD)  
MAXIMUM GROSS TOWING WEIGHT - 16,000 LBS.  
MAX. VERTICAL LIFT ON RECIEVER/JIB - 3,000 LBS.

**PROPRIETARY AND CONFIDENTIAL**  
THE INFORMATION CONTAINED IN THIS DRAWING IS THE SOLE PROPERTY OF <INSERT COMPANY NAME HERE>. ANY REPRODUCTION IN PART OR AS A WHOLE WITHOUT THE WRITTEN PERMISSION OF <INSERT COMPANY NAME HERE> IS PROHIBITED.

		UNLESS OTHERWISE SPECIFIED:		NAME	DATE
		DIMENSIONS ARE IN INCHES	DRAWN	PK	2/2/15
		TOLERANCES:	CHECKED		
		FRACTIONAL ±	ENG APPR.		
		ANGULAR: MACH ± BEND ±	MFG APPR.		
		TWO PLACE DECIMAL ±	Q.A.		
		THREE PLACE DECIMAL ±	COMMENTS:		
		INTERPRET GEOMETRIC TOLERANCING PER:			
		MATERIAL			
NEXT ASSY	USED ON	FINISH			
APPLICATION		DO NOT SCALE DRAWING			

<b>STAR INDUSTRIES</b>		
TITLE:		
MODEL 1395B SUPER DUTY LIFT N TOW		
SIZE	DWG. NO.	REV
<b>A</b>	<b>1395B-01</b>	
SCALE: 1:20	WEIGHT: 432 LBS.	SHEET 1 OF 1