

FORKLIFT

CONCRETE HOPPER

Operator's Manual for Model 1575



BEFORE USE, READ AND UNDERSTAND THE COMPLETE OPERATOR'S MANUAL.

If you need clarification or any additional information call your Star dealer or call Star Industries @ 1-800-541-1797 during normal business hours.

| SPECIFICATIONS | | |
|--|---------------|--------------|
| Model | Load Capacity | Empty Weight |
| 1575 | ¾ cuyd. | 770 lbs. |
| Fork Pocket Spread - 39½" Center to Center | | |
| Accepts forks up to 7" wide x 3" thick | | |

Engineer Approved:

The Star Industries Model 1575 Concrete Hopper is designed for use on telehandlers (extendible reach forklifts) and straight mast forklifts as well. Their design has been reviewed and carries an engineer's stamp of approval to meet a 3 to 1 or better factor of safety.

The design of the attachment gives access to hard to reach spots due to the Swivel Chute - 30" effective length, swings 40 degrees (20 degrees to each side), and the slope of chute is adjustable with the chain. The discharge gate can be controlled manually with handle, which can be positioned on either side.

Be aware that the rated capacity of the Concrete Hopper itself does not reflect the capacity of the telehandler/forklift. The total load must not exceed the capacity shown on the telehandler/forklift load chart which will vary with make and model as well as fork and/or boom position.

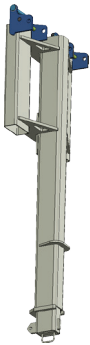
DANGER - DO NOT USE WITHOUT INSTALLING RETAINING PINS behind the heel of each fork and securing with hair pins or cotter pins

Safety chain(s) must also be used. Wrap chain around a strong part of the fork carriage and secure with locking grab hook.

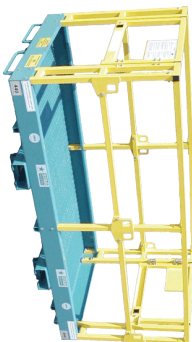
BEFORE USE, READ AND UNDERSTAND THE COMPLETE OPERATOR'S MANUAL.

If you need clarification or any additional information call your Star dealer or call Star Industries @ 1-800-541-1797 during normal business hours.

Customers Who Bought this product also bought



Heavy Duty Jib
Extend The Reach Of Your Forklift
Farther, Higher And Over Obstructions



Safety Work Platforms -
Turn your forklift into an
Aerial work platform



Universal Lift Hooks -
Make it safe and secure
when lifting suspended loads.

Visit www.starindustries.com or call us at 800-541-1797 for more information on these and other great products.

Use it With Confidence:

Star Industries has been manufacturing forklift attachments for over 25 years and has earned an excellent safety record. In addition, Star attachments have proven themselves repeatedly on all types of jobs all over the United States as well as in Canada, Mexico and South America.

Please be aware that the information contained in this manual is intended as a guide and does not replace the need for the user to know, understand, and observe all applicable company, local, state, and federal safety codes and/or requirements. In addition, any relevant safety requirements or recommendations contained in the forklift operator's manual must be observed.

Before Use:

Make sure the operator is well qualified to operate the specific forklift model to be used, has read and understands this manual and has reviewed the forklift operator's manual for any additional requirements, limitations, restrictions, or additional safety procedures prescribed by the forklift manufacturer. The forklift operator must also be properly certified under OSHA requirements to operate the forklift to be used.

Inspect the Concrete Hopper to make sure it is in good condition. There must not be any broken welds, deformation of the steel tube or other component, nor any cracks in the steel.

Inspect the chute and discharge gate to make sure they are complete, are in good condition.

Inspect to make sure the fork retaining pins are present and attached to their retaining chains and that the pins and attachment plates are in good condition.

Make sure the hair pins used to secure the fork retaining pins are present and in good condition.

Check that all decals are in place and legible. The following decals are required: "Empty Weight", "Caution", and "Rated Lift Capacity". (*Replacement decals are available from a Star dealer.*)

If any defects, missing components, damage or excessive wear are found, discontinue use until corrections or a safety assessment can be made by qualified personnel.

Make sure personnel involved understand any hand signals that will be required and all involved personnel understand what will be required of them.

Make sure the travel path is clear of obstructions and that adequate clearance will be maintained from all power lines.

Caution: 3

1. Risks are high for serious injury or death when working around suspended loads. The operator must avoid carrying the load over people and when loads are suspended all non essential personnel must remain clear of the "fall zone" (the area in which it is reasonably foreseeable that suspended material could fall in the event of an accident.) No personnel should ever be directly under the load.
2. Do not allow anyone to ride on the concrete hopper.
3. Do not make any repairs or modifications to the concrete hopper without written authorization from the manufacturer. Replacement of locking pins, decals and hair-pins does not require authorization.

WARRANTY PROCEDURE:

Upon notification, Star Industries will advise if the product will need to be returned to Star Industries for inspection and/or repair, or If the Star Dealer, or other entity, can be authorized to make the inspection/repair at their location, or if circumstances dictate other solutions. Dealer or other entity repairs must have prior written authorization. A "cost of repair" estimate will be required prior to authorization. Reimbursement will be at the current "Star Warranty Labor Rate" and will not include reimbursement for off-site travel. A Warranty Claim Form must be submitted within 45 days of warranty repair authorization to receive credit for repair. A return authorization number must be obtained from Star Industries before a product can be returned for inspection and/or warranty and that number must appear on the return shipping label. Upon inspection, Star Industries will determine if the product is defective and if so, whether it will be repaired or replaced. Repair or replacement is at the discretion of Star Industries. Transportation charges to Star Industries are not covered under the warranty and must be prepaid by dealer or customer unless it is within the first two years of warranty. In which case, if evidence acceptable to Star Industries, is provided that the product is defective and the return is from within the continental United States or Canada, Star will arrange for return shipment at Star Industries expense. Products found to be defective within the initial two year period and returned to Star Industries for repair or replacement will be returned to the dealer or customer freight prepaid providing it is within the continental United States or Canada. Warranted products to be shipped outside the United States or Canada and those warranted after the initial 2 years will be shipped freight collect. Unwarrantable products will be returned freight collect at the request of the dealer or customer, otherwise they will be destroyed.

LIMITATION OF DAMAGES:

Star's obligation under this warranty shall not include costs of installation, duty, taxes or any other charges whatsoever or any liability for direct, indirect, incidental or consequential damages or delay. Star's liability for any and all losses and damage to purchaser resulting from any cause whatsoever, including negligence or breach of form of warranty, express or implied by Star, alleged damage for defective goods, irrespective of whether such defects are discoverable or latent, shall in no event exceed the purchase price of the particular goods. Products repaired or replaced under this warranty are warranted only for the remainder of the original warranty. Any improper use including operation after discovery of defective or worn parts not approved by Star or any alteration or repair by others in such manner as in Star's judgment affects the product materially and adversely shall void this warranty.

THE FOREGOING WARRANTIES ARE EXCLUSIVE AND ARE IN LIEU OF ALL OTHER WARRANTIES (WHETHER WRITTEN, ORAL OR IMPLIED) INCLUDING WARRANTIES OF MERCHANTABILITY AND WARRANTY OF FITNESS FOR A PARTICULAR PURPOSE.

STAR INDUSTRIES LIMITED WARRANTY

Star Products are warranted to the original purchaser against defective workmanship and/or materials (when properly installed, used, and maintained) for a period as specified below from date of delivery to the customer by an authorized Star Dealer or direct from Star Industries. This warranty does not cover misuse, abuse, normal wear and tear, or accidental damage.

| | |
|--------------------------|--|
| 5 year Warranty: | All Star products except as noted below. (Includes HD Auger Drives & most non-hydraulic products) |
| 2 year Warranty: | Medium Duty Auger Drives |
| 1 year Warranty: | Auger Bits and Auger Accessories (excludes auger drives), Crane Forks, Grapples, Angle Broom, Self Dumping Hoppers, Replacement Forks, and Over the Bucket Forks |
| 6 month Warranty: | Concrete Mixers |

WARRANTY CLAIM NOTIFICATION:

Product defects should be reported to the Star dealer from whom the product was purchased or to Star Industries in writing promptly after discovery. Preferably photographs showing the defect should also be provided along with a written report of circumstances involved. Warranty claims not made within 30 days after discovery of the defect shall be null and void.

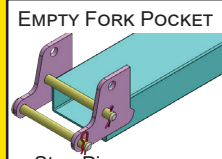
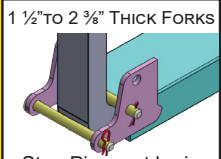
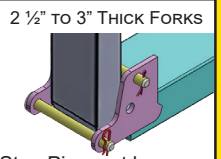
WARRANTY DETERMINATION:

If a warranty claim is found worthy and made within the warranty period we reserve the right at our discretion to repair existing defects or to replace it with the same or current model free of charge or to issue a credit for the reasonable cost of repair or take possession of the equipment and issue reimbursement for the calculated value.

Installation:

The Concrete Hopper is installed on the forklift by inserting both forks fully into the fork pockets so that the rear of the Concrete Hopper is against the back of the fork. The fork retaining pins are then installed through the retaining plates and behind the heel of the forks and are secured with hair pins. This locks the Concrete Hopper to the forks to prevent it from sliding off the forks. Safety chain with locking grab hook must also be used.

DANGER - DO NOT USE WITHOUT INSTALLING RETAINING PINS behind the heel of each fork and securing with hair pins or cotter pins

| | | |
|--|--|--|
|  <p>EMPTY FORK POCKET</p> <p>Stop Pin on some attachments are not removable</p> |  <p>1 1/2" TO 2 3/8" THICK FORKS</p> <p>Stop Pin must be in lower hole with using 1 1/2" to 2 3/8" thick forks</p> |  <p>2 1/2" TO 3" THICK FORKS</p> <p>Stop Pin must be upper holes when using 2 1/2" to 3" thick forks</p> |
|--|--|--|

Safety chain(s) must also be used. Wrap chain around a strong part of the fork carriage and secure with locking grab hook.

Rated Capacities:

The rated capacity as shown in specifications also appears on the Concrete Hopper decal. Be aware that these capacities are for the Concrete Hopper itself and do not in any way reflect the capacity of the forklift. Refer to the forklift operator's manual and/or load chart for capacity ratings and any limitations or restrictions when using this type of attachment. Remember the weight of the Concrete Hopper and all concrete materials must be included with the weight of the load to determine total weight being lifted. If there is any question as to the forklift's lifting capacities when using this attachment, contact the forklift manufacturer for clarification.

Use:

When using the Concrete Hopper, the forklift forks must remain level. The Concrete Hopper is designed for concrete placing only and must not be used to lift any other type of load. When placing concrete, the area below the lift should be clear of personnel. All personnel must maintain a safe distance away from danger area should a failure occur.

Safety Precautions:

1. Before elevating the load, make sure the forklift mast or boom is level (vertical) - not leaning to the right or left. Do not use the Concrete Hopper when operating on a side slope.
2. Do not use the Concrete Hopper to drag or pull a load.
3. Do not leave concrete loads unattended.
4. Take care that the chute does not rub, bump, come in contact with an obstruction.

5. Keep all personnel clear while the load is being raised, moved, or lowered. Forklift operator should be watchful of the load at all times, especially when it is in motion.
6. Never allow more than one person to give signals to the forklift operator except to warn of a hazardous situation.
7. Never allow anyone to work under a loaded hopper.
8. Never exceed rated capacity of any part of the lifting system.
9. Never allow anyone to ride on or in Concrete Hopper.
10. Forklift operator must be properly trained and have required certifications.
11. Before using the Concrete Hopper check to see that it is properly secured to the forklift as described in the installation section and that the hair pins are properly secured.
12. Determine that the loads to be handled are within the capabilities of the forklift. Keep in mind that rated capacities will likely decrease when the boom is in a raised position, or when the mast is tilted forward, or in the case of telehandlers, when the boom is extended.
13. Forks should be level or tipped upward (never down below level) when using the Concrete Hopper.
14. Do not pull loads – it is designed for concrete placing only.
15. Any time the load is raised make sure the forklift is on level, firm footing.
16. Refer to the forklift operator's manual for more information on handling elevated loads as well as information for safe and proper forklift operation.
17. Always comply with all local, state, and federal Safety regulations.

TURN YOUR FORKLIFT INTO A CONCRETE PLACER



**REDUCES CONCRETE PLACEMENT COSTS BY
UTILIZING YOUR JOB SITE FORKLIFT**

