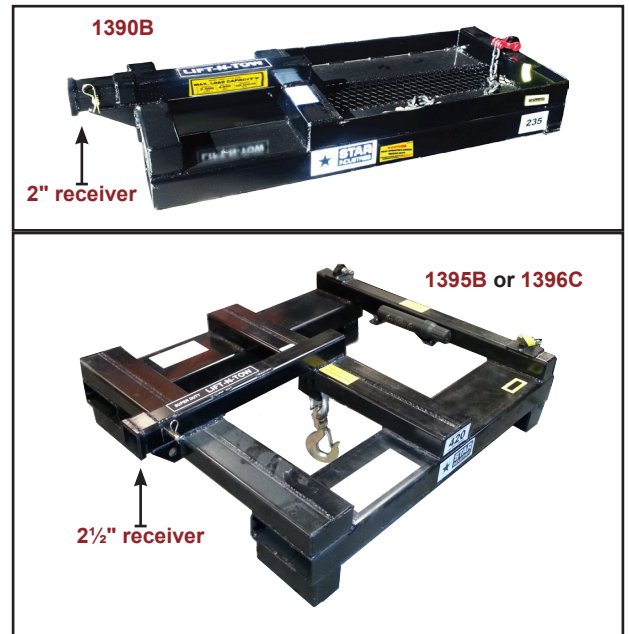




FORKLIFT

LIFT-N-TOWS

Operator's Manual
 for Model **1390B, 1395B, 1395B-12K & 1396C**



BEFORE USE, READ AND UNDERSTAND THE COMPLETE OPERATOR'S MANUAL.

If you need clarification or any additional information call your Star dealer or call Star Industries @ 1-800-541-1797 during normal business hours.

SPECIFICATIONS

Model	Lift Hook Capacity	Tongue Lifting Capacity	Towing Capacity	Empty Weight
1390B	4,000 lbs.	2,000 lbs.	10,000 lbs.	250 lbs.
1395B	10,000 lbs.	3,000 lbs.	16,000 lbs.	400 lbs.
1396C	12,000 lbs.	6,000 lbs.	30,000 lbs.	420 lbs.
1395B-12K	12,000 lbs.	3,000 lbs.	16,000 lbs.	400 lbs.

Caution: Some trailer adapters may be rated less and consequently would de-rate the capacity of receiver to their rated capacity.

ADAPTERS & HITCHES for Lift-N-Tows

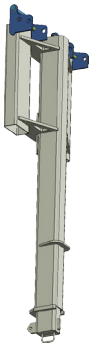
Model	Description	Empty Weight
1391	2" BALL w/ Adapter for #1390B LIFT-N-TOW 10,000 lbs. MGTW - 700 lbs. max. vert. lift	10 lbs.
1392	PINTLE Hitch w/ Adapter 10,000 lbs. MGTW - 2,400 lbs. max. vert. lift	15 lbs.
1393	COMBO Hitch w/ Adapter 10,000 lbs. MGTW - 2,400 lbs. max. vert. lift	20 lbs.
1394PH	PINTLE Hitch w/ 2 1/2 " Adapter for #1395B Super Duty 16,000 lbs.MGTW - 3,000 lbs max vert. lift	21 lbs.
1394CH	COMBO Hitch w/ 2 1/2 " Adapter for #1395B Super Duty 16,000 lbs.MGTW - 3,000 lbs max vert. lift	25 lbs.

15 Ton Pintle Hitch is included with Model 1396C

BEFORE USE, READ AND UNDERSTAND THE COMPLETE OPERATOR'S MANUAL.

If you need clarification or any additional information call your Star dealer or call Star Industries @ 1-800-541-1797 during normal business hours.

Customers Who Bought this product also bought



Heavy Duty Jib
 Extend The Reach Of Your Forklift
 Farther, Higher And Over Obstructions



Safety Work Platforms -
 Turn your forklift into an
 Aerial work platform



Concrete Hoppers -
 Turns Your forklift into
 A concrete placer.

Visit www.starindustries.com or call us at 800-541-1797 for more information on these and other great products.

Prior to Use:

Inspect the Lift-N-Tow to ensure it is in safe operating condition and account for all necessary components. If any defects or damage are found; discontinue use until corrections or safety assessment can be made by qualified personnel.

Installation:

Install on forklift by inserting both forks fully into the Lift-N-Tow pockets so that the rear of Lift-N-Tow is against the back of the fork. Wrap the safety chain around a strong part of the forklift carriage. Be sure to choose an attachment point on the forklift that keeps the chain as level as possible. Take as many wraps as needed to take up the slack then hook the chain back onto itself, locking grab hook pointing down. If hook is open type contact your Star dealer for a replacement. Chain angle must not exceed 45°.

Swivel Hook

A swivel hook is located on the underside of the Lift-N-Tow for picking suspended loads. The hook is rated at a lift capacity stated in the chart below and is 30" from the back of the Lift-N-Tow. The lift capacity rating is for the Lift-N-Tow and does not reflect the capacity of the forklift. Furthermore, the increased load center of the hook (increased from the 24" standard to 30") and the weight of the Lift-N-Tow de-rates the capacity of the forklift and must be taken into consideration when lifting loads. The forklift manufacturers should be able to provide de-rated load charts if requested. Take care not to overload the forklift.

Model	Lift Hook Capacity	Empty Weight
1390B	4,000 lbs.	250 lbs.
1395B	10,000 lbs.	400 lbs.
1396C	12,000 lbs.	420 lbs.
1395B-12K	12,000 lbs.	400 lbs.

Trailer Adapter Receiver

The receiver mounted on top of the Lift-N-Tow accepts standard square trailer adapters. (**model 1390B accepts 2" adapters; 1395B & 1396C accepts 2½" adapters**) The adapter must be secured with the hitch pin and hairpin provided. The receiver is rated for a specified lift capacity (**chart below**) and a specified maximum gross towing weight (**M.G.T.W**) (**chart below**) however; the capacity of many of the trailer adapters are less and their capacity should not be exceeded

Model	Tongue Lifting Capacity	Towing Capacity (M.G.T.W.)
1390B	2,000 lbs.	10,000 lbs.
1395B	3,000 lbs.	16,000 lbs.
1396C	6,000 lbs.	30,000 lbs.
1395B-12K	3,000 lbs.	16,000 lbs.

WARRANTY PROCEDURE:

Upon notification, Star Industries will advise if the product will need to be returned to Star Industries for inspection and/or repair, or If the Star Dealer, or other entity, can be authorized to make the inspection/repair at their location, or if circumstances dictate other solutions. Dealer or other entity repairs must have prior written authorization. A "cost of repair" estimate will be required prior to authorization. Reimbursement will be at the current "Star Warranty Labor Rate" and will not include reimbursement for off-site travel. A Warranty Claim Form must be submitted within 45 days of warranty repair authorization to receive credit for repair. A return authorization number must be obtained from Star Industries before a product can be returned for inspection and/or warranty and that number must appear on the return shipping label. Upon inspection, Star Industries will determine if the product is defective and if so, whether it will be repaired or replaced. Repair or replacement is at the discretion of Star Industries. Transportation charges to Star Industries are not covered under the warranty and must be prepaid by dealer or customer unless it is within the first two years of warranty. In which case, if evidence acceptable to Star Industries, is provided that the product is defective and the return is from within the continental United States or Canada, Star will arrange for return shipment at Star Industries expense. Products found to be defective within the initial two year period and returned to Star Industries for repair or replacement will be returned to the dealer or customer freight prepaid providing it is within the continental United States or Canada. Warranted products to be shipped outside the United States or Canada and those warranted after the initial 2 years will be shipped freight collect. Unwarrantable products will be returned freight collect at the request of the dealer or customer, otherwise they will be destroyed.

LIMITATION OF DAMAGES:

Star's obligation under this warranty shall not include costs of installation, duty, taxes or any other charges whatsoever or any liability for direct, indirect, incidental or consequential damages or delay. Star's liability for any and all losses and damage to purchaser resulting from any cause whatsoever, including negligence or breach of form of warranty, express or implied by Star, alleged damage for defective goods, irrespective of whether such defects are discoverable or latent, shall in no event exceed the purchase price of the particular goods. Products repaired or replaced under this warranty are warranted only for the remainder of the original warranty. Any improper use including operation after discovery of defective or worn parts not approved by Star or any alteration or repair by others in such manner as in Star's judgment affects the product materially and adversely shall void this warranty.

THE FOREGOING WARRANTIES ARE EXCLUSIVE AND ARE IN LIEU OF ALL OTHER WARRANTIES (WHETHER WRITTEN, ORAL OR IMPLIED) INCLUDING WARRANTIES OF MERCHANTABILITY AND WARRANTY OF FITNESS FOR A PARTICULAR PURPOSE.

STAR INDUSTRIES LIMITED WARRANTY

Star Products are warranted to the original purchaser against defective workmanship and/or materials (when properly installed, used, and maintained) for a period as specified below from date of delivery to the customer by an authorized Star Dealer or direct from Star Industries. This warranty does not cover misuse, abuse, normal wear and tear, or accidental damage.

5 year Warranty:	All Star products except as noted below. (Includes HD Auger Drives & most non-hydraulic products)
2 year Warranty:	Medium Duty Auger Drives
1 year Warranty:	Auger Bits and Auger Accessories (excludes auger drives), Crane Forks, Grapples, Angle Broom, Self Dumping Hoppers, Replacement Forks, and Over the Bucket Forks
6 month Warranty:	Concrete Mixers

WARRANTY CLAIM NOTIFICATION:

Product defects should be reported to the Star dealer from whom the product was purchased or to Star Industries in writing promptly after discovery. Preferably photographs showing the defect should also be provided along with a written report of circumstances involved. Warranty claims not made within 30 days after discovery of the defect shall be null and void.

WARRANTY DETERMINATION:

If a warranty claim is found worthy and made within the warranty period we reserve the right at our discretion to repair existing defects or to replace it with the same or current model free of charge or to issue a credit for the reasonable cost of repair or take possession of the equipment and issue reimbursement for the calculated value.

General Safety Requirements

Forklift operator must be properly trained and have required certifications. When using the Lift-N-Tow to move trailer mounted equipment or trailers make sure the Lift-N-Tow is properly secured to the forklift, the adapter is secured to the Lift-N-Tow, and the hitch is properly engaged. The forks should remain level when using the Lift-N-Tow. Also, be certain the forklift is capable of stopping the moving load.

When lifting with the hook make sure the hook is properly secured to the Lift-N-Tow and that the load is kept from swinging. Refer to the forklift operator's manual for proper operation and safety precautions for the forklift. Always observe all local, state, and federal Safety regulations.

Scheduled Inspections:

A visual inspection of the Lift-N-Tow should be performed by qualified personnel on a regular basis. The most critical areas to look at are around the receiver hitch welds and the areas around the hook plate and its welds. The trailer adapter, the ball or Pintle hitch, the swivel hook and shackle and the safety chain, shackle and locking grab hook should also be inspected for excessive wear, cracks, deformation, or missing parts. If a trailer ball is involved make sure the attachment nut is tight. If any defect is found that may affect safety, use of the Lift-N-Tow should be discontinued until proper repairs or part replacements are made or it is determined that the defect will not compromise safety. In the meantime it should be clearly labeled "Do Not Use"

In addition it should be determined that the adapter and hitch capacity ratings are at least equal to the Lift-N-Tow receiver ratings – 2,000 lbs vertical lift and 10,000 GVTW. Hollow tube trailer adapters typically do not meet this requirement. If the adapter used is rated less, than the Lift-N-Tow it should be de-rated appropriately.

Decals should be replaced if found missing or illegible. Required decals include "Maximum Load Capacities and Caution" decal, "Empty Weight" decal and the Data Plate decal. Replacement decals are available from a Star Industries dealer at a nominal cost.

Frequency of visual inspections should be based on individual usage patterns. We recommend that you perform inspections on the same basis as you inspect the forklift. Daily, weekly, etc. The forklift operator should do a visual inspection at the beginning of every shift looking for notable visible damage or missing parts.

Lift Hook Use

When using the Lift Hook the forklift forks must remain level or the tips tilted slightly upward. The Lift Hook is designed for vertical lift only and must not be used to pull a load. When lifting a load, the area below the lift should be clear of personnel. All personnel must maintain a safe distance away from

danger area should a failure occur.

are properly secured and screw pins are tight.

Safety Precautions:

1. Before elevating the load, make sure the forklift mast or boom is level (vertical) - not leaning to the right or left. Do not use the Lift Hook when operating on a side slope.
2. Before the load is raised make sure slings, chains, or straps are properly secured and are not twisted around each other or entangled.
3. The load must be picked up so that it is equally balanced and hangs level.
4. When lifting a load, guard against shock loading by taking up the slack in slings or straps slowly. Prevent jerking at the beginning of the lift, and accelerate or decelerate slowly.
5. Do not use the Lift Hook to drag or pull a load.
6. Do not leave suspended loads unattended.
7. Take care that the load does not swing or come in contact with an obstruction.
8. Keep all personnel clear while the load is being raised, moved, or lowered. Forklift operator should be watchful of the load at all times, especially when it is in motion.
9. Never allow more than one person to give signals to the forklift operator except to warn of a hazardous situation.
10. Never raise or carry the load higher than necessary.
11. Never allow anyone to work under a suspended load.
12. Never exceed rated capacity of any part of the lifting system.
13. Never allow anyone to ride on Lift Hook or on the load being carried.
14. Forklift operator must be properly trained and have required certifications.
15. Before using the Lift Hook check to see that it is properly secured to the forklift as described in the installation section and that the shackle and hook are properly secured and screw pins are tight.
16. Determine that the loads to be handled are within the capabilities of the forklift. Keep in mind that rated capacities will likely decrease when the boom is in a raised position, or when the mast is tilted forward, or in the case of telehandlers, when the boom is extended.
17. Forks should be level or tipped upward (never down below level) when using the Lift Hook.
18. Do not pull loads – it is designed for vertical lift only.
19. The load should always be carried low and kept from swinging using tag lines as necessary. Any time a load is raised, extreme caution should be exercised as the forklift is far more vulnerable to tipping with a raised load.
20. Any time the load is raised make sure the forklift is on level, firm footing.
21. Refer to the forklift operator's manual for more information on handling elevated loads as well as information for safe and proper forklift operation.
22. Always comply with all local, state, and federal Safety regulations.