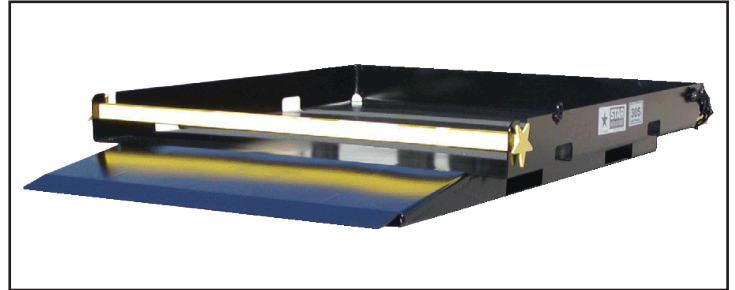




FORKLIFT **SAFETY LOADING PLATFORM**

Operator's Manual for Model 1385



BEFORE USE, READ AND UNDERSTAND THE COMPLETE OPERATOR'S MANUAL.

If you need clarification or any additional information call your Star dealer or call Star Industries @ 1-800-541-1797 during normal business hours.

SPECIFICATIONS MODEL 1385

Load Capacity	Overall Dimensions (includes ramp)	Empty Weight
1,000 lbs.	50" wide x 65" long x 8.5" high	305 lbs.
Accepts forks up to 2.75" thick x 7" wide x 48" long		
* 36" Safety Chain and Locking Grab Hook secures platform to forklift *		

Description and Intended Use:

The Safety Loading Platform is a platform attachment with a fixed 15" ramp intended for safe and efficient loading and unloading of materials and equipment with a forklift. It is designed for use on any type forklift that has adequate capacity to carry the load and has 48" long forks. The platform is not designed for and should never be used to elevate personnel.

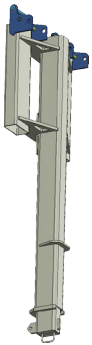
Prior to Use:

Inspect the platform to ensure it is in good operating condition and account for all necessary components. Replace any unreadable decals. Inspect chains to make sure cotter pins are properly installed on the grab hooks. If defects are found that may affect safety, discontinue use until proper repairs or parts replacements are made or it is determined by qualified personnel that the defect will not compromise its safe use. In the meantime it should be clearly labeled "Do Not Use"

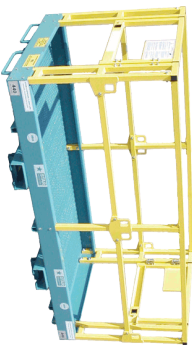
BEFORE USE, READ AND UNDERSTAND THE COMPLETE OPERATOR'S MANUAL.

If you need clarification or any additional information call your Star dealer or call Star Industries @ 1-800-541-1797 during normal business hours.

Customers Who Bought this product also bought



Heavy Duty Jib
 Extend The Reach Of Your Forklift
 Farther, Higher And Over Obstructions



Safety Work Platforms -
 Turn your forklift into an
 Aerial work platform



Concrete Hoppers -
 Turns Your forklift into
 A concrete placer.

Visit www.starindustries.com or call us at 800-541-1797 for more information on these and other great products.

Installation:

Install on forklift by inserting both forks fully into the Safety Loading Platform pockets so that the rear of Safety Loading Platform is against the back of the fork. Wrap each safety chain around a strong part of the forklift carriage taking up all of the slack in the chain, then hook the chain back onto itself making sure the open part of the grab hook is pointing down. The chains should be hooked so that they have as straight a pull as possible. Nevertheless, the chain's angles should never exceed 45 degrees. Both chains should be hooked to minimize any side movement of the Load-N-Tow on the forks when towing equipment.

Loading Platform

The loading platform is used to load and unload all types of material and equipment. The front ramp is fixed making it easy to roll or slide equipment and materials on or off the platform. The load capacity of the deck is 1,000 lbs. evenly distributed for all models. This capacity does not reflect the capacity of the forklift, which may be more. Refer to the load chart on the forklift for load capacities and remember to deduct the weight of the Safety Loading Platform from those capacities. **THE DECK IS NOT A PERSONNEL PLATFORM AND SHOULD NEVER BE USED TO ELEVATE PERSONNEL.**

General Safety Requirements

The forklift operator must be properly trained and have required certifications. When using the Safety Loading Platform always secure it to the forklift with the chains provided and keep forks level. When transporting equipment the load is not top heavy and likely to tip. Refer to the forklift operator's manual for proper operation and safety precautions for the forklift. Always observe all company, local, state, and federal Safety regulations.

WARRANTY PROCEDURE:

Upon notification, Star Industries will advise if the product will need to be returned to Star Industries for inspection and/or repair, or If the Star Dealer, or other entity, can be authorized to make the inspection/repair at their location, or if circumstances dictate other solutions. Dealer or other entity repairs must have prior written authorization. A "cost of repair" estimate will be required prior to authorization. Reimbursement will be at the current "Star Warranty Labor Rate" and will not include reimbursement for off-site travel. A Warranty Claim Form must be submitted within 45 days of warranty repair authorization to receive credit for repair. A return authorization number must be obtained from Star Industries before a product can be returned for inspection and/or warranty and that number must appear on the return shipping label. Upon inspection, Star Industries will determine if the product is defective and if so, whether it will be repaired or replaced. Repair or replacement is at the discretion of Star Industries. Transportation charges to Star Industries are not covered under the warranty and must be prepaid by dealer or customer unless it is within the first two years of warranty. In which case, if evidence acceptable to Star Industries, is provided that the product is defective and the return is from within the continental United States or Canada, Star will arrange for return shipment at Star Industries expense. Products found to be defective within the initial two year period and returned to Star Industries for repair or replacement will be returned to the dealer or customer freight prepaid providing it is within the continental United States or Canada. Warranted products to be shipped outside the United States or Canada and those warranted after the initial 2 years will be shipped freight collect. Unwarrantable products will be returned freight collect at the request of the dealer or customer, otherwise they will be destroyed.

LIMITATION OF DAMAGES:

Star's obligation under this warranty shall not include costs of installation, duty, taxes or any other charges whatsoever or any liability for direct, indirect, incidental or consequential damages or delay. Star's liability for any and all losses and damage to purchaser resulting from any cause whatsoever, including negligence or breach of form of warranty, express or implied by Star, alleged damage for defective goods, irrespective of whether such defects are discoverable or latent, shall in no event exceed the purchase price of the particular goods. Products repaired or replaced under this warranty are warranted only for the remainder of the original warranty. Any improper use including operation after discovery of defective or worn parts not approved by Star or any alteration or repair by others in such manner as in Star's judgment affects the product materially and adversely shall void this warranty.

THE FOREGOING WARRANTIES ARE EXCLUSIVE AND ARE IN LIEU OF ALL OTHER WARRANTIES (WHETHER WRITTEN, ORAL OR IMPLIED) INCLUDING WARRANTIES OF MERCHANTABILITY AND WARRANTY OF FITNESS FOR A PARTICULAR PURPOSE.

STAR INDUSTRIES LIMITED WARRANTY

Star Products are warranted to the original purchaser against defective workmanship and/or materials (when properly installed, used, and maintained) for a period as specified below from date of delivery to the customer by an authorized Star Dealer or direct from Star Industries. This warranty does not cover misuse, abuse, normal wear and tear, or accidental damage.

5 year Warranty:	All Star products except as noted below. (Includes HD Auger Drives & most non-hydraulic products)
2 year Warranty:	Medium Duty Auger Drives
1 year Warranty:	Auger Bits and Auger Accessories (excludes auger drives), Crane Forks, Grapples, Angle Broom, Self Dumping Hoppers, Replacement Forks, and Over the Bucket Forks
6 month Warranty:	Concrete Mixers

WARRANTY CLAIM NOTIFICATION:

Product defects should be reported to the Star dealer from whom the product was purchased or to Star Industries in writing promptly after discovery. Preferably photographs showing the defect should also be provided along with a written report of circumstances involved. Warranty claims not made within 30 days after discovery of the defect shall be null and void.

WARRANTY DETERMINATION:

If a warranty claim is found worthy and made within the warranty period we reserve the right at our discretion to repair existing defects or to replace it with the same or current model free of charge or to issue a credit for the reasonable cost of repair or take possession of the equipment and issue reimbursement for the calculated value.

Scheduled Inspections:

A visual inspection of the Safety Loading Platform should be performed by qualified personnel on a regular basis. All welds should be visually inspected for cracks particularly around the welds for the ramp. The safety chains, shackles and grab hooks should be inspected for excessive wear, cracks, deformation, or missing parts. If any defect is found that may affect safety, use of the Safety Loading Platform should be discontinued until proper repairs or parts replacements are made or it is determined by qualified personnel that the defect will not compromise safety. In the meantime it should be clearly labeled "Do Not Use"

Decals should be replaced if found missing or illegible. Required decals include "Maximum Load Capacities and Caution" decal, "Empty Weight" decal and the Data Plate decal. Replacement decals are available from Star Industries at a nominal cost.

Frequency of visual inspections should be based on individual usage patterns. We recommend that you perform inspections on the same basis as you inspect the forklift. Daily, weekly, etc. The forklift operator should do a visual inspection at the beginning of every shift looking for notable visible damage or missing parts.

“SAFETY LOADING PLATFORM”

SIMILAR TO OUR POPULAR LOAD-N-TOW

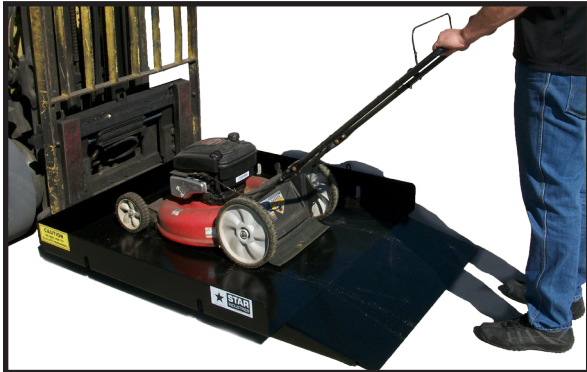
- ★ Simpler in design and . . .
- ★ At a lower price everyone can justify

GET THE JOB DONE FAST



Slide It On The Forks And One Man Loads And Unloads Heavy Awkward Rental Equipment Quickly And Safely

- ★ SHORTENS CUSTOMER WAIT TIME
- ★ CUTS LABOR COSTS
- ★ PREVENTS BACK INJURIES
- ★ REDUCES DAMAGE TO EQUIPMENT



Look At These Great Features:

- Fixed 15” Ramp for easy loading
- End and Side Fork Pockets – pick up platform from either direction
- Slots for standard 2” straps to secure load when needed
- Simple retaining bar keeps load from sliding off
- Large 48” x 48” deck handles most small to medium equipment
- Heavy Duty Construction ensures durability for years to come

**Meets / Exceeds
OSHA & ANSI
Requirements**

SPECIFICATIONS MODEL 1385		
Load Capacity	Overall Dimensions (includes ramp)	Empty Weight
1,000 lbs.	50” wide x 65” long x 8.5” high	305 lbs.
Accepts forks up to 2.75” thick x 7” wide x 48” long		
* 36” Safety Chain and Locking Grab Hook secures platform to forklift *		

End Fork Pocket Size: 48” long x 7⁵/₈” x 2⁷/₈” ID / Center to Center of Fork Pockets: 33” / Pocket Ends are closed.
Side Fork Pocket Size: 8” x 3” ID / Center to Center of Fork Pockets: 24” / Pocket Ends are open.